



**REGIONAL SPECIALISED METEOROLOGICAL CENTRE-TROPICAL CYCLONES, NEW DELHI**  
**TROPICAL WEATHER OUTLOOK**

**DEMS-RSMC TROPICAL CYCLONES NEW DELHI DATED 06.01.2024**

**TROPICAL WEATHER OUTLOOK FOR NORTH INDIAN OCEAN (THE BAY OF BENGAL AND THE ARABIAN SEA) VALID FOR NEXT 168 HOURS ISSUED AT 0600 UTC OF 06.01.2024 BASED ON 0300 UTC OF 06.01.2024.**

**BAY OF BENGAL:**

YESTERDAY'S TROUGH FROM SOUTH SRI LANKA TO SOUTHWEST ADJOINING WESTCENTRAL BAY OF BENGAL RUN FROM SOUTH SRI LANKA TO SOUTHWEST BAY OF BENGAL OFF SOUTH ANDHRA PRADESH COAST ACROSS NORTH SRI-LANKA COAST AND EXTENDED UPTO 3.1 KM ABOVE MEAN SEA LEVEL AT 0300UTC OF TODAY, THE 6TH JANUARY, 2024.

SCATTERED LOW AND MEDIUM CLOUDS WITH EMBEDDED INTENSE TO VERY INTENSE CONVECTION LAY OVER CENTRAL PARTS OF SOUTH BAY OF BENGAL ADJOINING SOUTH WESTCENTRAL BAY OF BENGAL AND MODERATE TO INTENSE CONVECTION LAY OVER REST OF SOUTH BAY OF BENGAL ADJOINING EQUATORIAL INDIAN OCEAN. SCATTERED LOW AND MEDIUM CLOUDS WITH EMBEDDED ISOLATED WEAK CONVECTION LAY OVER REST OF CENTRAL BAY OF BENGAL.

**\*PROBABILITY OF CYCLOGENESIS (FORMATION OF DEPRESSION) DURING NEXT 168 HRS:**

24 HOURS	24-48 HOURS	48-72 HOURS	72-96 HOURS	96-120 HOURS	120-144 HOURS	144-168 HOURS
NIL	NIL	NIL	NIL	NIL	NIL	NIL

**\*NOTE: EVERY 24HR FORECAST IS VALID UPTO 0300 UTC (0830 IST) OF NEXT DAY**

**ARABIAN SEA:**

YESTERDAY'S CYCLONIC CIRCULATION OVER LAKSHADWEEP AREA & NEIGHBOURHOOD PERSISTED OVER THE SAME REGION EXTENDED UPTO 1.5KM ABOVE MEAN SEA LEVEL AT 0300UTC OF TODAY, THE 6<sup>TH</sup> JANUARY, 2024. THE TROUGH RUN FROM THE CYCLONIC CIRCULATION OVER LAKSHADWEEP AREA & NEIGHBOURHOOD TO VIDARBHA ACROSS SOUTH KONKAN, SOUTH MADHYA MAHARASHTRA AT 0.9 KM ABOVE MEAN SEA LEVEL AT 0300UTC OF TODAY, THE 6<sup>TH</sup> JANUARY, 2024.

SCATTERED LOW AND MEDIUM CLOUDS WITH EMBEDDED MODERATE TO INTENSE CONVECTION LAY OVER SOUTH ARABIAN SEA LAKSHADWEEP ISLANDS AREA & MALDIVES AREA.

**\*PROBABILITY OF CYCLOGENESIS (FORMATION OF DEPRESSION) DURING NEXT 168 HRS:**

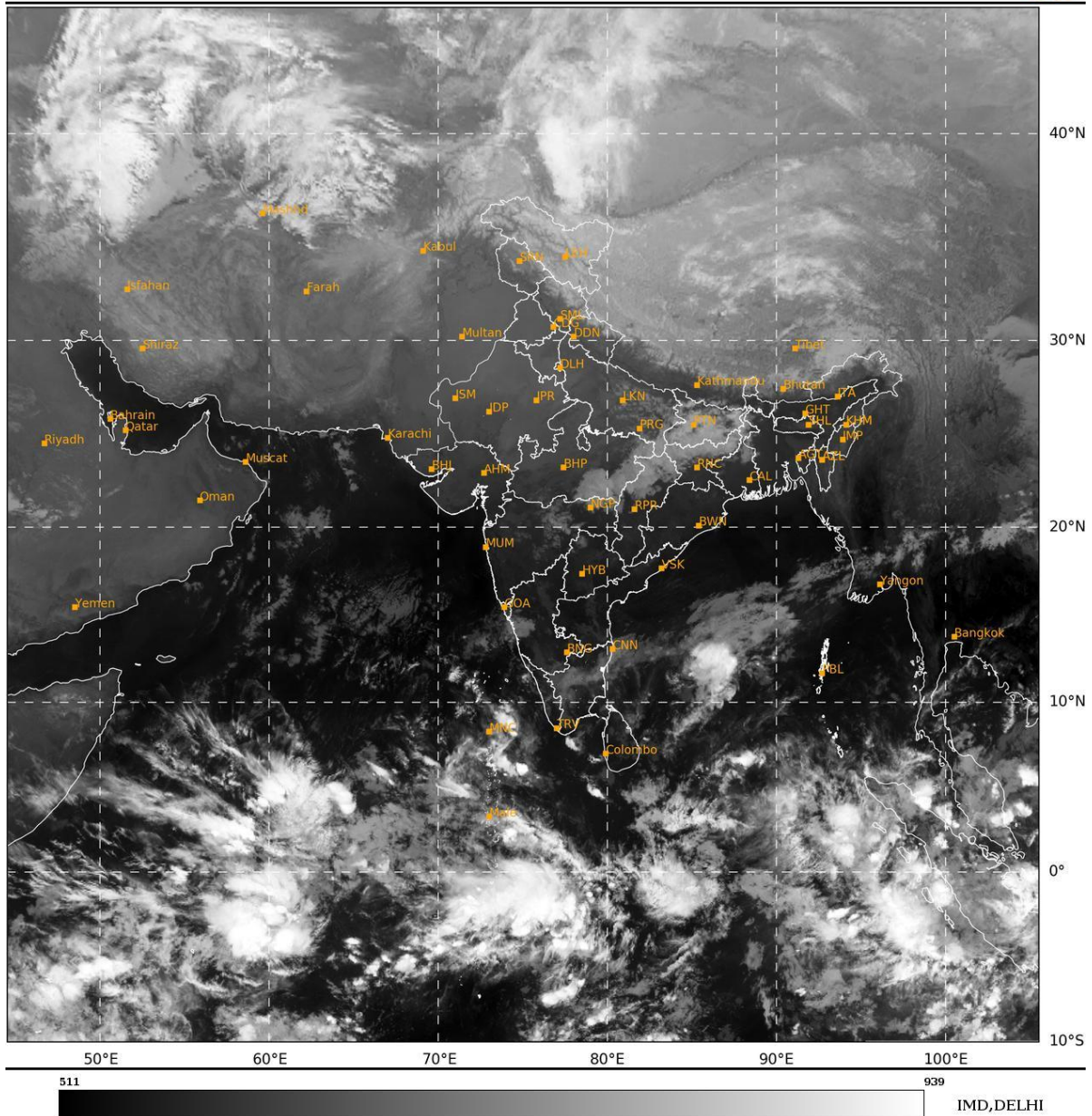
Cloud distribution: (a) Isolated: <25%, Scattered:25-50%, Broken: 51-75%, Solid:>75%, Convection Intensity: (a) Weak: Cloud Top Temperature (CTT) >-25°C, (b) Moderate: CTT: - 25°C to -40°C, (c) Intense: CTT: - 41°C to -70°C and (d) Very Intense: : Less than -70°C  
PROBABILITY OF CYCLOGENESIS (FORMATION OF DEPRESSION):NIL: 0%, LOW: 1-33%, , MODERATE: 34-66% AND HIGH: 67-100%  
This is a guidance Bulletin for WMO/ESCAP Panel Member countries. Visit respective National websites for Country specific Bulletins

24 HOURS	24-48 HOURS	48-72 HOURS	72-96 HOURS	96-120 HOURS	120-144 HOURS	144-168 HOURS
NIL	NIL	NIL	NIL	NIL	NIL	NIL

**\*NOTE: EVERY 24HR FORECAST IS VALID UPTO 0300 UTC (0830 IST) OF NEXT DAY**

SAT : INSAT-3D IMG  
IMG\_TIR1 10.8 um  
LIC Mercator

06-01-2024/(0300 to 0327) GMT  
06-01-2024/(0830 to 0857) IST



Cloud distribution: (a) Isolated: <25%, Scattered:25-50%, Broken: 51-75%, Solid:>75%, Convection Intensity: (a) Weak: Cloud Top Temperature (CTT) >-25°C, (b) Moderate: CTT: - 25°C to -40°C, (c) Intense: CTT: - 41°C to -70°C and (d) Very Intense: : Less than -70°C  
PROBABILITY OF CYCLOGENESIS (FORMATION OF DEPRESSION):NIL: 0%, LOW: 1-33%, , MODERATE: 34-66% AND HIGH: 67-100%  
This is a guidance Bulletin for WMO/ESCAP Panel Member countries. Visit respective National websites for Country specific Bulletins